

# CERTIFICATE OF LOCATION OF GOVERNMENT CORNER

NORTHEAST Corner of Section 29, Township 107N, Range 40W

5th Principal Meridian, State of Minnesota, County of Murray.

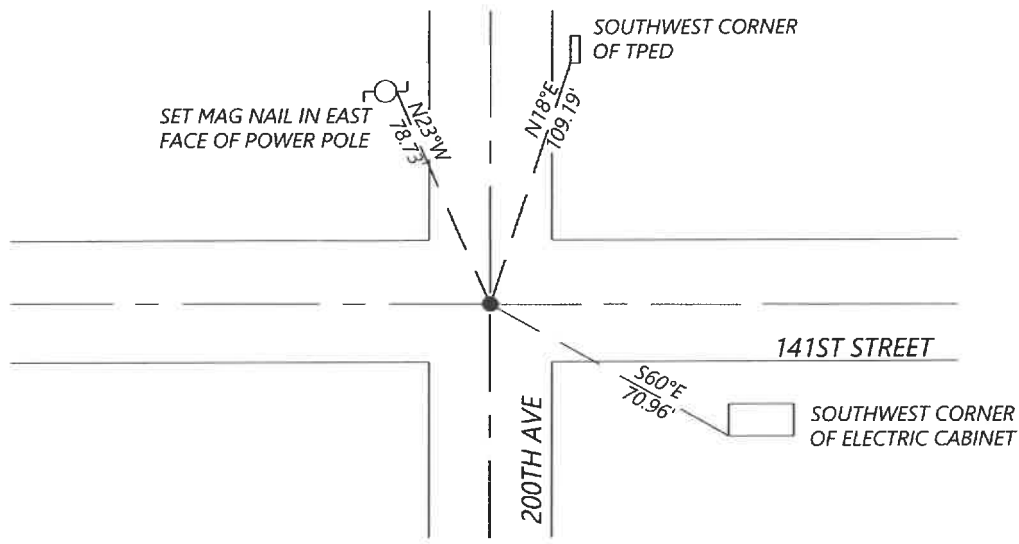
At the corner location shown on the sketch:

☐ On \_\_\_\_\_ found a \_\_\_\_\_  
DATE

☐ left monument as found ☐ lowered monument ☐ removed monument (explain)

☒ On 12/07/2021 placed a 1/2"x18" REBAR CAPPED "RLS 57085" SEE STATEMENT OF EVIDENCE FOR HOW THIS CORNER  
DATE  
WAS RE-ESTABLISHED.

## SKETCH OF REFERENCE TIES



N.T.S.

Statement of evidence for this corner location is on back of this page.

I hereby certify that this document was researched and prepared by me or under my direct supervision and that I am a licensed Land Surveyor under the laws of the State of Minnesota.

Signature [Signature]

Date 4-18-2022 License No. 57085

Title:

☒ Land Surveyor ☐ Professional Engineer  
☐ County Surveyor ☐ County Engineer

## OFFICE OF THE COUNTY RECORDER

County of Murray

I hereby certify that this document was filed in the Co.

Recorder's office at \_\_\_\_\_ M. on the  
22<sup>nd</sup> day of April A.D. 20 22

County Recorder [Signature]  
by \_\_\_\_\_, Deputy

DOCUMENT NO. \_\_\_\_\_

SETH WECKMAN  
Minnesota License No. 57085

**Statement of Evidence:**

Northeast corner of Section 29, Township 107 North, Range 40 West, 5th Principal Meridian, Murray County, Minnesota.

1861 Lewis Brockman, U.S. Deputy Surveyor, set a post in mound.

Undated Unknown, placed a concrete stone.

Undated Unknown, spout part of pump head, seven small stones, pint flask.

1954 M.E. Koopman, survey mentions a round cement cylinder , marked "x" on top.

1975 Unknown, survey has a note "did not locate".

2021 Westwood Professional Services searched the area and did not recover a monument. Lines of occupation consist of a North/South bituminous road and an East/West gravel road. No reference ties were found near the corner location. Set a 1/2" x 18" rebar with cap marked, "RLS 57085" using the North/South road centerline for the East/West position and on line between the North Quarter of Section 29 and the northeast corner of Section 28 for the North/South position. Established 3 local reference ties.

*Analysis of the recovered data, field evidence and survey measurements, indicates that the monument set is the correct perpetuation of this corner. For additional information concerning this corner please contact Westwood Professional Services.*